

**WE'VE GOT YOU COVERED**



# MASCOT *Mats*

**Entryways**

**Gyms**

**Libraries**

**Auditoriums**

**Locker Rooms**

**Faculty Offices**

**Coaches Boxes**

*What's new...*



**MATERIAL**

**SHAPES**

**COLOR**





# WE'VE GOT YOU COVERED

There's no easier or more practical way to add extra spirit to your school than with Neff® Mascot Mats.

Attractive, industrial strength Mascot Mats are constructed with heavy traffic in mind. Mats are tough and durable and come in a variety of shapes and sizes to fit every purpose. The Vivid Colors are permanently dyed and guaranteed not to fade. They also come with an impressive 3-year warranty.

Ordering is easy and a quick delivery time of just two weeks makes these mats even more appealing. Neff Mascot Mats are the perfect way to showcase your school spirit!

## GREAT FEATURES



- **100% static dissipative nylon** meets fire codes and is safe to use around sensitive electronic equipment\*.

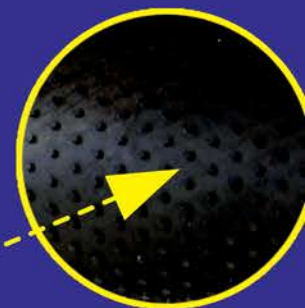
- **Easy to clean**-dry clean, steam-clean, or launder\*.

- **Perma-Dye™ Process** ensures **long-term colorfastness\***.

- **Heavy-duty rubber backing.**

- **Easy-to-customize layouts** make designing your mats a breeze.

- **Mats meet National Federation of High Schools Guidelines.** (where applicable).



## 3 YEAR WARRANTY

Your 100% satisfaction is our guarantee to you.

\*Super Scraper, Waterhog and Floor Impression Mats are manufactured using different substrates than the rest of our mats. Please see inside for more details about these special mats.





*Let nothing stand in your way!*



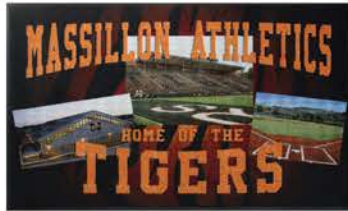
Digital print is now available with the NEW High Definition Mascot Mats and the NEW Custom Shape High Definition Mascot Mats. Your designs print brighter and more vivid with almost 10 times the resolution of the previously available printed mats.

## High Definition Mascot Mats

**SIZES:** 2'x3', 3'x5', 3'x12'

4'x6', 4'x8', 6'x10', 4'x25'

(Additional sizes avail. upon request.)



**LAYOUTS:** Choose from any of our Mascot Mat layouts or create a custom design as shown.

## Custom Shape High Definition Mascot Mats

**SIZES:** 3'x3', 3'x4', 3'x5', 4'x4'

4'x5', 4'x6', 4'x8', 5'x5', 5'x6', 6'x6', 6'x8'

(Additional sizes avail. upon request.)

Heavy duty 90 mil rubber backing on all Custom Shape HD Mascot Mats.



### High Definition Features:

- Photorealistic Images
- StainStopper™ to protect color
- 3 Year Warranty
- 100% Static Dissipative Nylon

Custom Layout Option



Floor Impression Mats offer NO LIMITS on creativity. Ideal for designs with very small text or fine details. These mats will look great. They will perform well in high traffic areas. And are easy to clean.

**SIZES:** 18"x24", 2'x3', 3'x4',

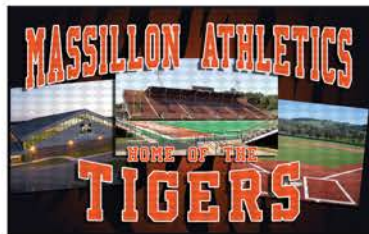
3'x5', 3'x8', 3'x10', 4'x6'

(Additional sizes avail. upon request.)

**LAYOUTS:** Choose from any of our Mascot Mat layouts or create a custom design.



Custom Layout Option



Custom Layout Option



Diamond pattern or smooth surface for crystal clear image.





Our complete line of industrial strength Mascot Mats are constructed with heavy traffic in mind. Vibrant colors are permanently dyed and guaranteed not to fade. Mats are covered by a 3 year warranty.

**SIZES:** 2'x3', 3'x5', 4'x6', 4'x8'  
(Additional sizes avail. upon request.)

**PERFECT FOR:**

- Entryways
- Gyms
- Libraries
- Auditoriums
- Locker rooms
- Faculty offices

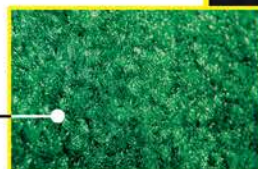


MM4

Permanently dyed images use the exclusive Perma-Dye™ process for long-term colorfastness.

Heavy-duty rubber backing guarantees our mats will lay flat and will not crack or curl.

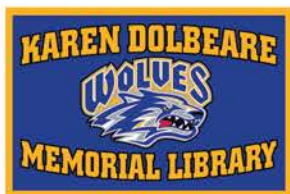
100% static dissipative nylon meets fire codes and is safe to use around electronics.



**LAYOUTS:** (Additional/custom layouts also avail.)



MM1



MM2



MM3



MM5

Make a BIG impression and let everyone know you've got school spirit with Gym Runners. Perfect in front of the player's bench, at gym entrances and for use at ceremonies. Durable and easy to clean.

**LAYOUTS:**



MR1



MR2



**SIZE:** 4'X25'







**SIZE:**  
2'X3'

# LAYOUTS:



MM6A



MM6B



MM6C

Designed to meet each state's rules requirements-Check-In Mats provide a portable, long lasting solution to defining the check-in area. Durable & easy to clean, Check-In Mats are made to last and will look great year after year.



CHECK-IN MATS MEET THE GUIDELINES OF THE  
**NATIONAL FEDERATION OF HIGH SCHOOLS**

(INDIVIDUAL STATE REQUIREMENTS MAY VARY  
FROM NFHS SUGGESTED GUIDELINES)



# LAYOUTS:



MR1



MR2



MR6

# SIZES:

3'X12'  
3'X14'

(Additional sizes  
avail. upon  
request.)

Designed to meet each state's rules requirements, Coaches Box Mats provide a portable solution to defining the coaches box area. Durable, easy to clean mats are made to last and look great year after year.



COACHES BOX MATS MEET THE GUIDELINES OF THE  
**NATIONAL FEDERATION OF HIGH SCHOOLS**

(INDIVIDUAL STATE REQUIREMENTS MAY VARY  
FROM NFHS SUGGESTED GUIDELINES)







Ideal for indoor and outdoor use, the Waterhog is designed specifically to trap water and keep moisture off your floors. Waterhog mats utilize a special inlay artwork so mats stay vibrant and will not fade in the sun.

**SIZES:** 2'x3', 3'x4', 3'x5', 3'x10',  
4'x6', 4'x8', 4'x10', 6'x8', 6'x12'  
(Additional sizes avail. upon request.)

**LAYOUTS:** (Additional/custom layouts also avail.)

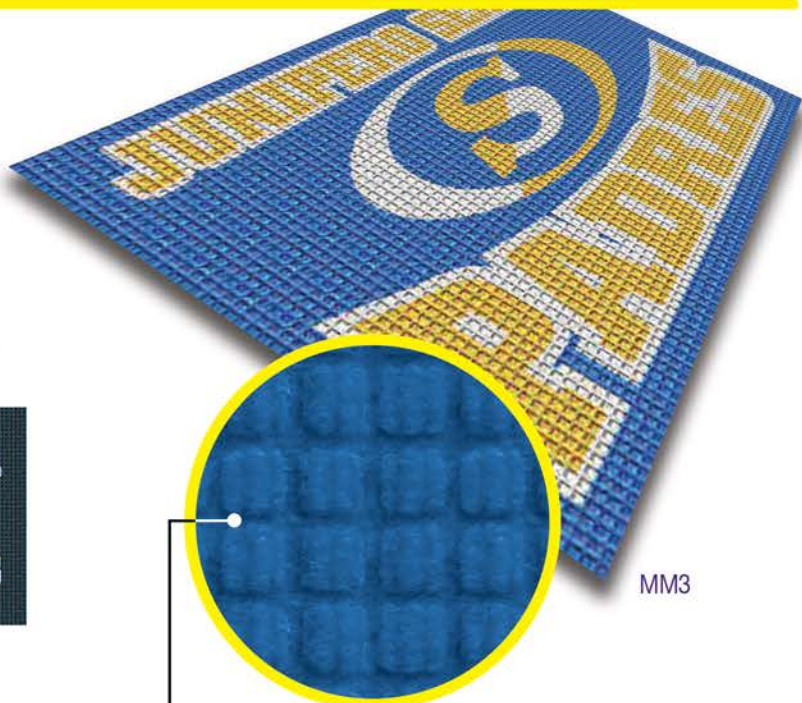


MM1



MM2

Certified anti-slip "high traction"  
by the National Floor Safety  
Institute.



MM3

Polypropylene fabric holds up  
to 1.5 gallons of water per  
square yard.



Ideally suited for all weather conditions-Super Scraper Mats help trap water, snow, dirt and grime and keep it off your floors. Mats are also impervious to sunlight and will not fade-making them a perfect choice for indoor and outdoor entryways.

Certified anti-slip "high traction"  
by the National Floor Safety  
Institute.

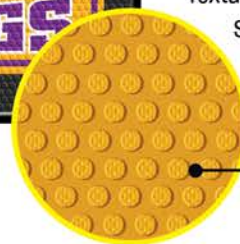
**SIZES:** 2.5'X3', 3'X5', 3'X10',  
4'X6', 4'X8', 6'X6', 6'X8'



MM3

Durable anti-slip Nitrile rubber.  
Vivid photo-quality graphics with  
vibrant color and crisp detail.

Textured surface cleats offer  
superior slip resistance  
and effectively scrape  
tough dirt and grime  
off shoes.



**LAYOUTS:** (Additional/custom layouts also avail.)



MM1



MM2



MM3



MM4



MM5



# UNDERSTANDING THE SUBSTRATES

Our line of mascot mats utilize a variety of surface treatments—choose the application that best fits your needs and select your desired mat accordingly.

## STATIC DISSIPATIVE NYLON SURFACE

For general,  
all-purpose use.

- Mascot Mats
- HD Mascot Mats
- Custom Shape HD Mascot Mats
- Gym Runners
- Coaches Box Mats
- Round Mascot Mats
- Player Check-in Mats
- Tri-Grip Mats

## TEXTURED SURFACE CLEATS

Ideal for keeping dirt  
and moisture off your  
floors.

- Super Scraper Mats

## TEXTURED POLYPROPYLENE FABRIC

Traps & holds up to  
1.5 gallons of water  
per sq. yard.

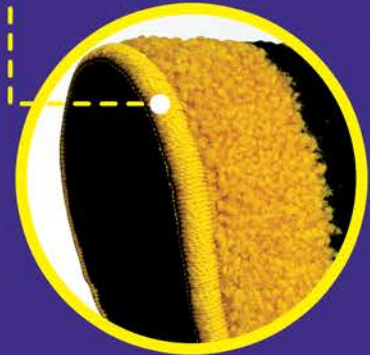
- Waterhog Mats

## DIAMOND PATTERN

Slip-resistant, UV,  
chemical and  
oil resistant

- Floor Impression  
Mats (Smooth surface  
also available)

## SURGED EDGES ■ Round Mascot Mats



## COLOR AVAILABILITY:

Please see your Sales Rep for actual color swatches

### Standard Mat Colors:

Mascot Mats, Gym Runners, Coaches Box Mats and Check-in Mats

415-Aquamarine	401-Black	430-Burgundy	431-Chocolate	419-Dark Grey
427-Dark Gold	421-Emerald Green	422-Forest Green	423-Gold	000-Hot Pink
410-Light Blue	P2-Maroon	405-Moss Green	417-Navy	429-Orange
411-Pearl White	407-Purple	406-Red	409-Rose	403-Royal Blue
413-Sandalwood	418-Silver	426-Suede	414-Turquoise	400-White
402-White Silver	425-Yellow			

### Water Hog Mat Colors:

150-Camel	151-Medium Brown	152-Dark Brown	153-Light Green	154-Charcoal
155-Red/Black	156-Medium Blue	157-Medium Grey	158-Bluestone	158-Evergreen
160-Bordeaux	161-Navy	162-White	163-Aquamarine	164-Gold
165-Soild Red	165-Yellow	167-Orange	168-Purple	

### HD and Custom Shape HD Mats Colors:

G7-Aquamarine	06-Black	K2-Burgundy	G1-Chocolate	07-Dark Grey
B2-Dark Gold	J6-Emerald Green	L6-Forest Green	B4-Gold	I2-Hot Pink
L2-Light Blue	B8-Maroon	H7-Moss Green	01-Navy	Orange
F5-Pearl White	B6-Purple	J2-Red	H2-Rose	M2-Royal Blue
F3-Sandalwood	010-Silver	F1-Suede	E8-Turquoise	White
N9-White Silver	A3-Yellow			

### Super Scraper and Floor Impression Mat Colors:

D6-Aquamarine	06-Black	C2-Orange	N10-Pearl White	F2-Brown
B6-Purple	K3-Burgundy	J4-Red	E2-Chocolate	H2-Rose
07-Dark Grey	N2-Royal	C1-Dark Gold	D5-Sandalwood	L7-Emerald Green
N6-Silver	J7-Forest Green	E4-Suede	B3-Gold	G8-Turquoise
I4-Hot Pink	F5-Vegas	L1-Light Blue	white-White	H1-Maroon
A10-White/Silver	K9-Moss Green	A3-Yellow	O1-Navy	K2-Cardinal

### TriGrip Mat Colors:

26 Autumn Brown	45 Black Opal	33 Blueberry Frost	2 Browntone	27 Burgundy Berry
3 Cabot Grey	13 Charcoal	9 Chocolate	41 Cranberry	5 Dark Granite
19 Emerald Green	20 Fir Green	29 Glen Green	11 Grey	25 Midnight Blue
16 Navy	14 Platinum	1 Red Black	42 Silver	43 Slate
52 Bay Blue	21 Solid Red	31 Stardust Grey	28 Steel Blue	32 Suede





MM6



MM6

Entryways

Gyms

Libraries

Auditoriums

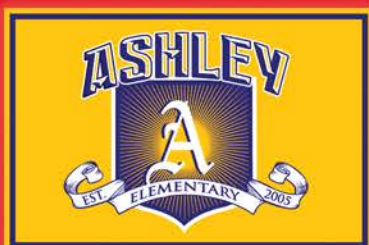
Locker Rooms

Faculty Offices

Coaches Boxes



MR6



MM6



MM3



MM8

**CONTACT YOUR SALES REP TO ORDER!**

OR CALL CUSTOMER SERVICE 1-800-232-6333

